



Gold Apollo Co., Ltd.

Alpha-Numeric Display Pager

MODEL : AL-924



PAGER PROGRAMMING GUIDE

Contents

GETTING STARTED	1
EQUIPMENT REQUIRED	1
EQUIPMENT SETUP	1
INSTALLING PROGRAMMER SOFTWARE.....	3
INSTALLATION	3
RUNNING.....	6
AL924 PROGRAMMING	7
INTRODUCTION	7
STARTING THE PROGRAMMER.....	7
MAIN MENU	9
MENU BAR.....	9
CODE AND FEATURES.....	11
<i>Frequency</i>	<i>11</i>
<i>Capcode (Decimal Address)</i>	<i>12</i>
<i>Auto Increase 1 after write</i>	<i>14</i>
ALERT AND STATUS	15
<i>Alerts and Status</i>	<i>15</i>
<i>Manu Of Pager</i>	<i>18</i>
<i>Manual Write</i>	<i>19</i>
<i>Prompts</i>	<i>19</i>
PROMPTS EDIT.....	20

Getting Started

The AL924T Pager Programming software, provides the flexibility to program AL924 pagers to meet individual requirements. To obtain the best results from the product, please take a few minutes to read this instruction guide.

Equipment Required

To install and operate the programmer, you need a system that meets the following minimum requirements:

1. An personal computer (PC) with printer port, or compatible
2. Windows 98 SE or above operating system (XP Recommended)
3. 256 MB of RAM
4. AL924 Programmer
5. An USB cable
6. AL924 Pager Programming Software

Equipment Setup

Refer to Figure 1 while performing the follows:

1. At the rear of the PC, connect the USB cable to the USB port on your computer.
2. Plug end of the USB cable into the AL924 programmer.
3. Hardware installation is complete.



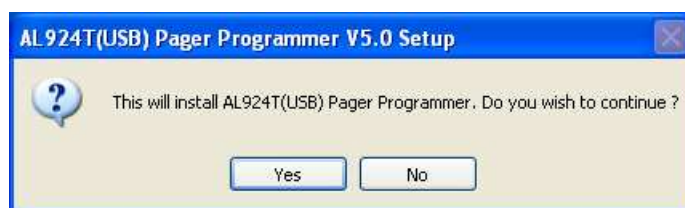
Figure 1 Programmer Hardware Connections

Installing Programmer Software

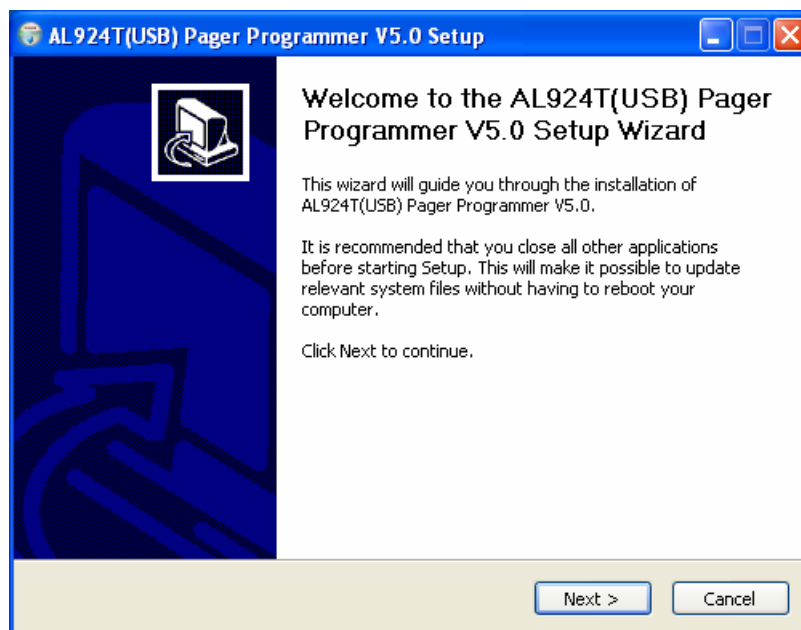
Installation

Install the programmer software into a PC as follows:

1. Uncompress the AL924T(USB)V50(NR).zip and save them in a temporary directory.
2. Double click the setup.exe file. Click on “Y”.

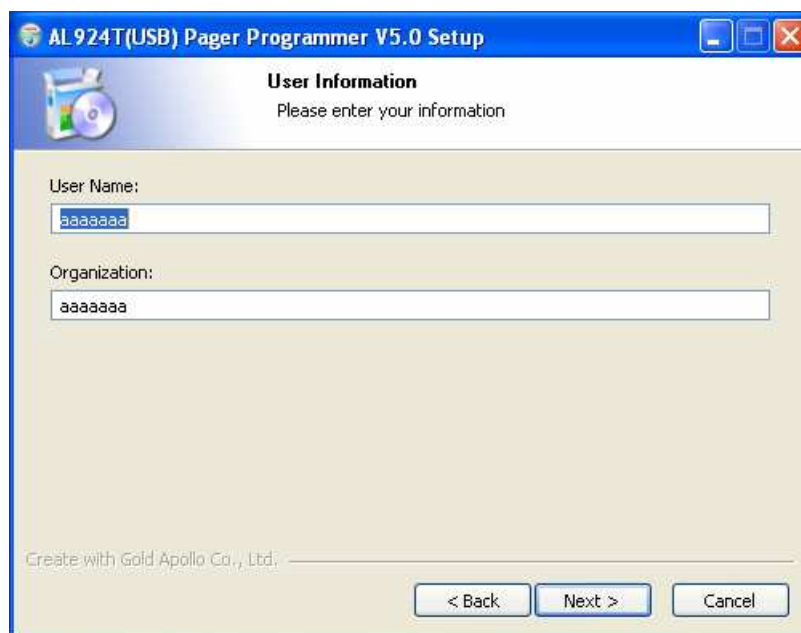


3. Click “Next” on the Welcome screen.

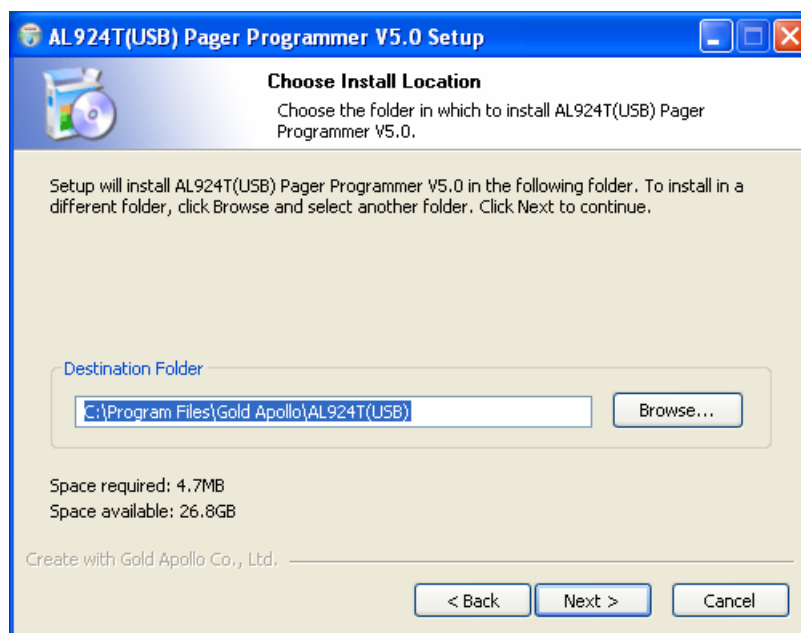


Installing Programmer Software

4. Enter your user information and click “Next”. (Note: you must enter at least a single character "into the company field)

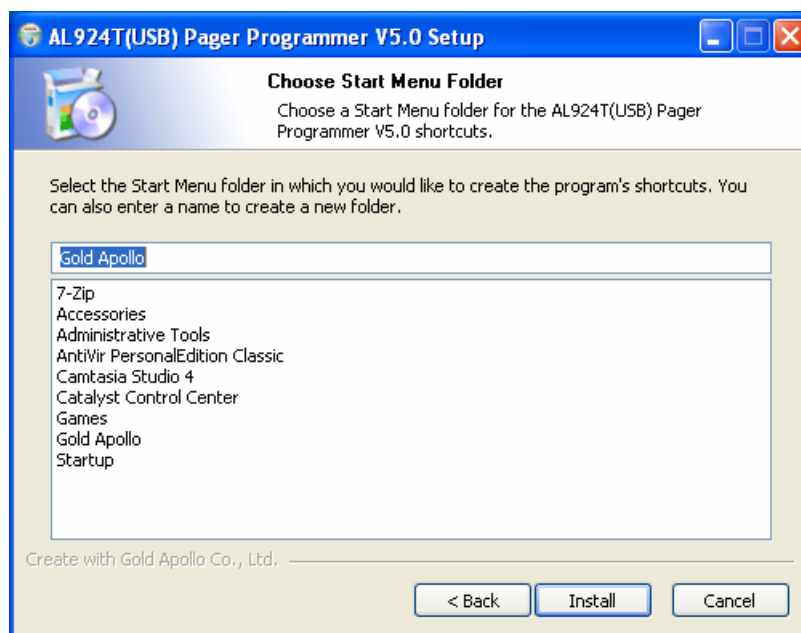


5. Choose where the program should be installed and click “Next”.

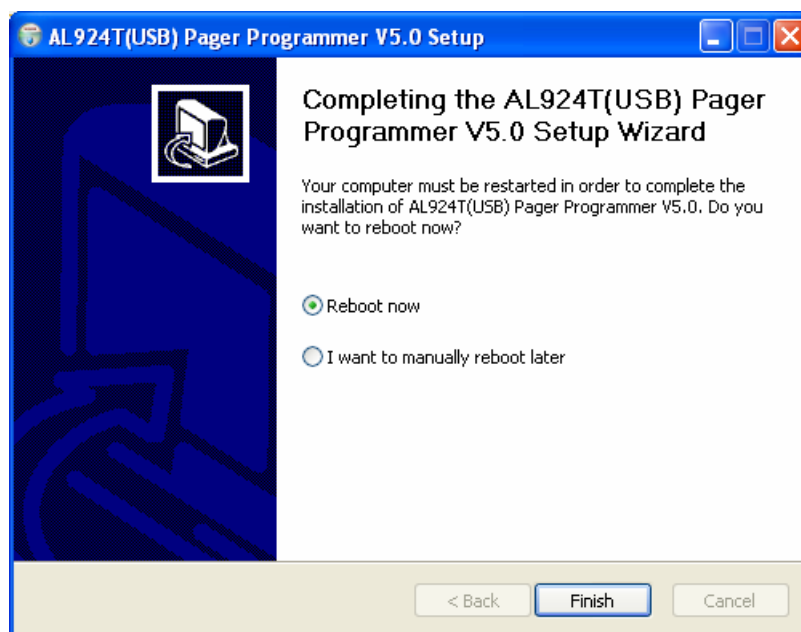


Installing Programmer Software

6. On the Select Program Folder screen choose where you would like the program to show up in your start menu and click “Install”.

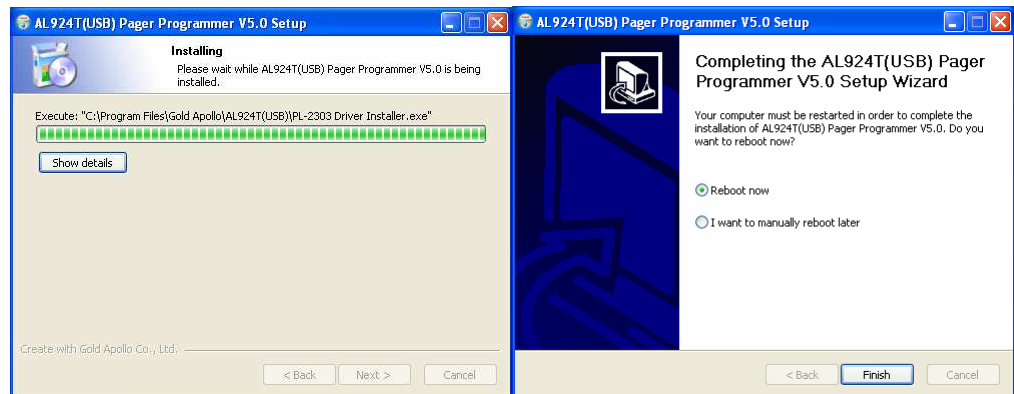
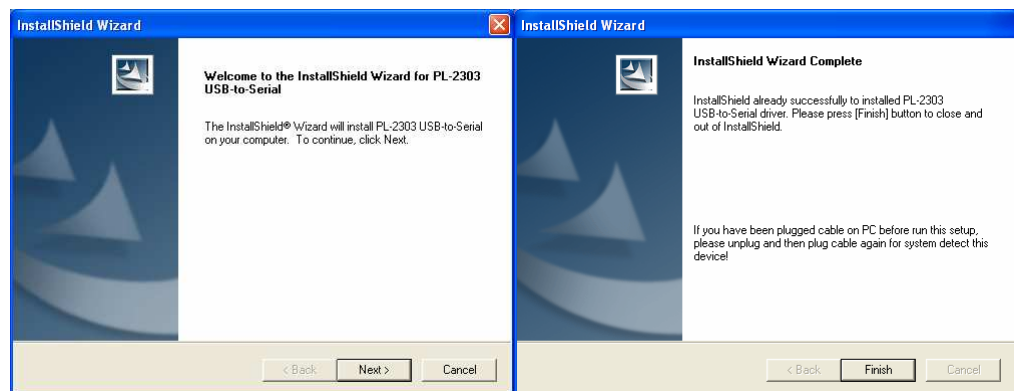
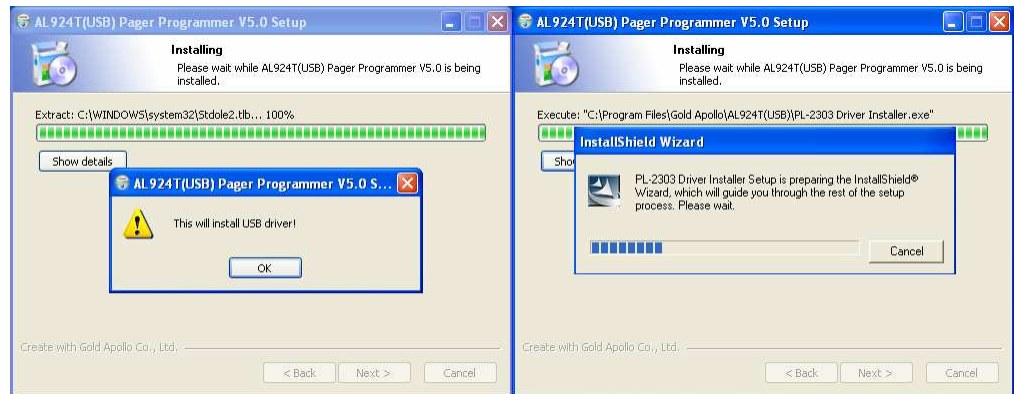


7. If you had installed USB driver then select reboot now and click “Finish” on the setup complete screen.



Installing Programmer Software

8. If you did not install USB driver, click “OK” to install USB driver.



9. Please reboot your computer after USB driver and programming software installed.

Running

You now have the program installed. To run it from the Start menu/ Programs/ Gold Apollo /AL924T Pager Programmer.

AL924 Programming

Introduction

Preparing a Pager for Reading or Programming:

2. Establish a computer hardware configuration.
3. Run the programming software of AL924.
4. A Power LED illuminates on the Programming Interface to indicate proper contact. If the Power LED did not illuminate then you must check the configuration and restart the programming software of AL924.
5. Align the pager contact pin holes with the contact pins of the AL924 Programmer.
6. Press down on the pager until it is tight in the fixture.
7. Turn the pager off or wait the pager until standby mode. The pager is now ready to read or program.

Starting the Programmer

1. The application can be launched from Start → Programs → Gold Apollo → AL924T Pager Programmer. The following window appears:



2. Input your password. If key in wrong password for 3 times, the system shuts off automatically. If the password is correct, the following window appears :

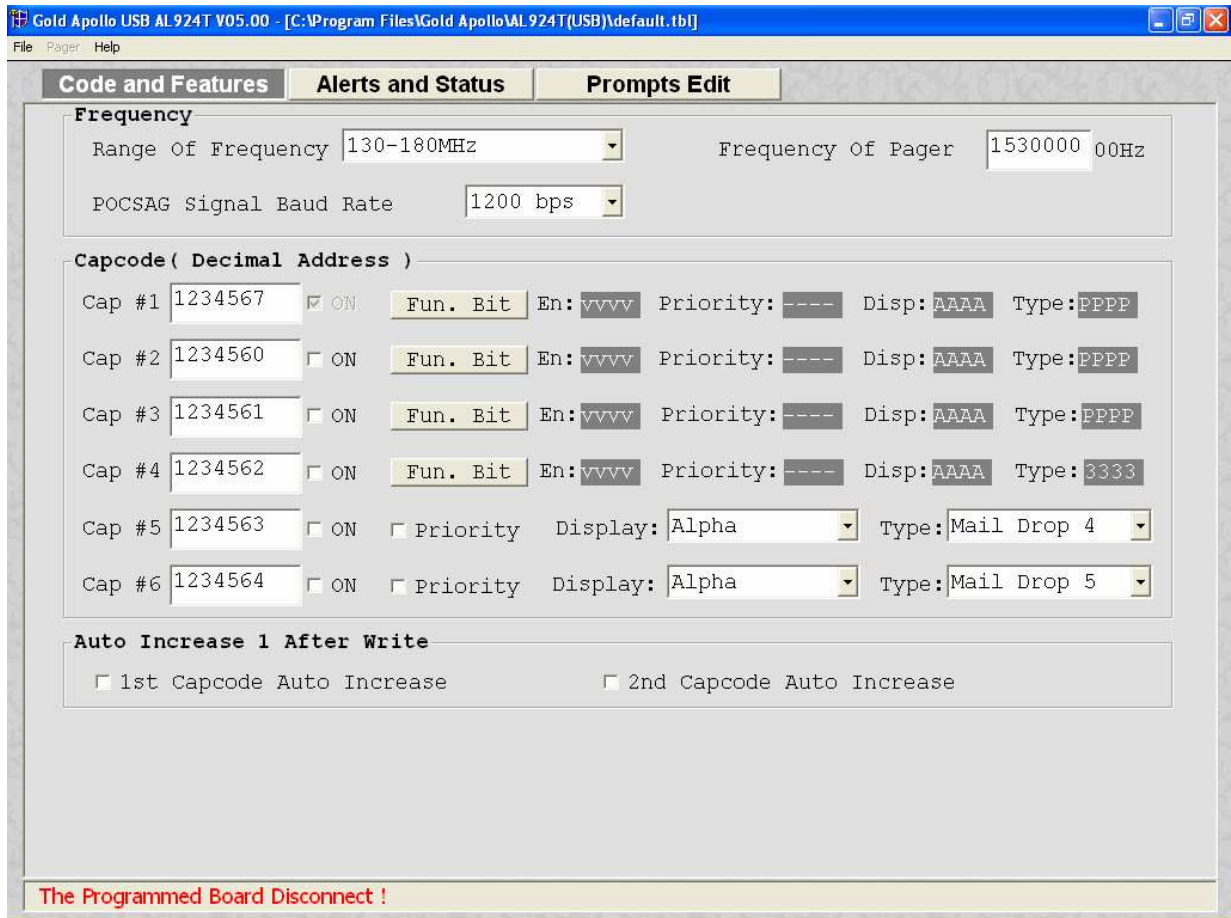


3. Now, the system examines that the AL924 programmer is well installed. If any problems encountered, the following window appears:



4. Please re-check the AL924 programmer and printer port are well installed or not. If connection succeeds with the AL924 programmer, the system enters the Main Menu.

Main Menu



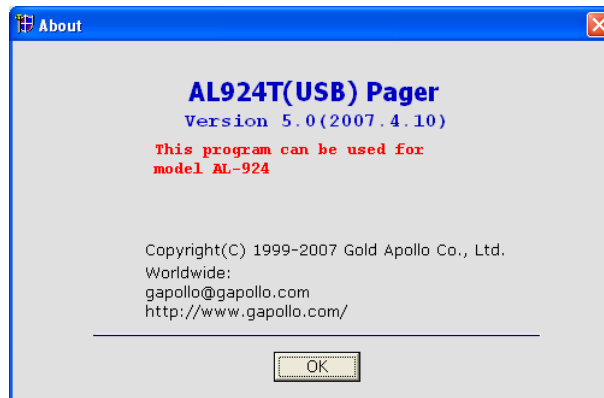
Menu bar

In the menu bar, there are main menus with submenus like those conventionally used in Windows applications.



- **File | Open**
Open the AL924 code-plug file. The file has the extension “.tbl”.
- **File | Save**
Save the current code-plug data to a file.
- **File | Save As**
Save the current code-plug data to a file with different filename.

- **Pager | Write**
Write the current code-plug data to the pager.
- **Pager | Read**
Read code-plug data from the pager.
- **Pager | Verify**
Verify the pager data.
- **Help**
Information about the AL924 pager programming version.



Code and Features

Code and Features	Alerts and Status	Prompts Edit
Frequency		
Range Of Frequency	130-180MHz	Frequency Of Pager 1530000 00Hz
POCSAG Signal Baud Rate	1200 bps	
Capcode (Decimal Address)		
Cap #1	1234567 <input checked="" type="checkbox"/> ON	Fun. Bit En: vvvv Priority: ---- Disp: AAAA Type: PPPP
Cap #2	1234560 <input type="checkbox"/> ON	Fun. Bit En: vvvv Priority: ---- Disp: AAAA Type: PPPP
Cap #3	1234561 <input type="checkbox"/> ON	Fun. Bit En: vvvv Priority: ---- Disp: AAAA Type: PPPP
Cap #4	1234562 <input type="checkbox"/> ON	Fun. Bit En: vvvv Priority: ---- Disp: AAAA Type: 3333
Cap #5	1234563 <input type="checkbox"/> ON	<input type="checkbox"/> Priority Display: Alpha Type: Mail Drop 4
Cap #6	1234564 <input type="checkbox"/> ON	<input type="checkbox"/> Priority Display: Alpha Type: Mail Drop 5
Auto Increase 1 After Write		
<input type="checkbox"/> 1st Capcode Auto Increase <input type="checkbox"/> 2nd Capcode Auto Increase		
The Programmed Board Disconnect !		

Frequency

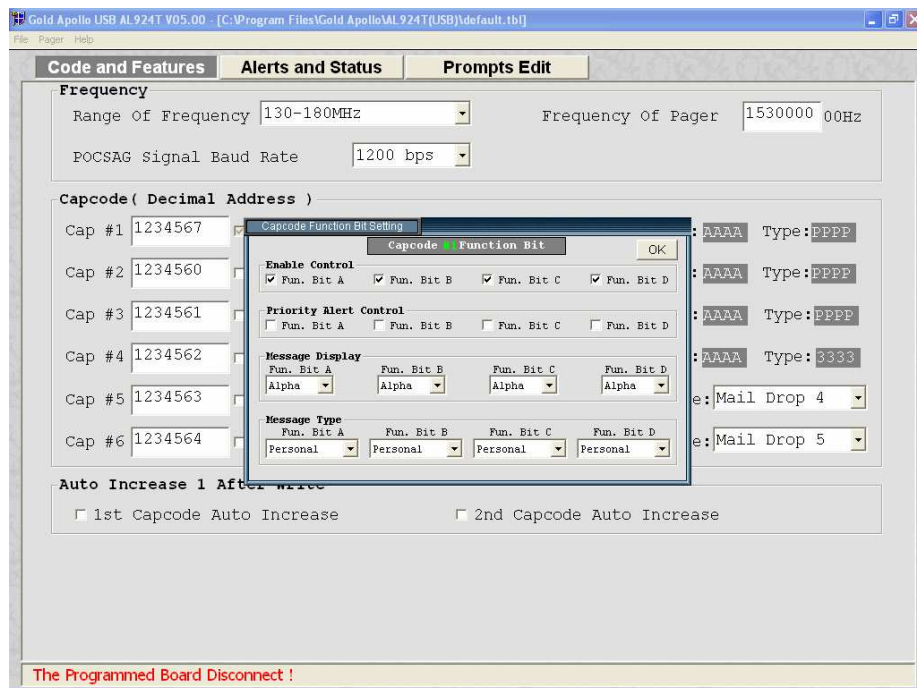
Frequency		
Range Of Frequency	130-180MHz	Frequency Of Pager 1530000 00Hz
POCSAG Signal Baud Rate	1200 bps	

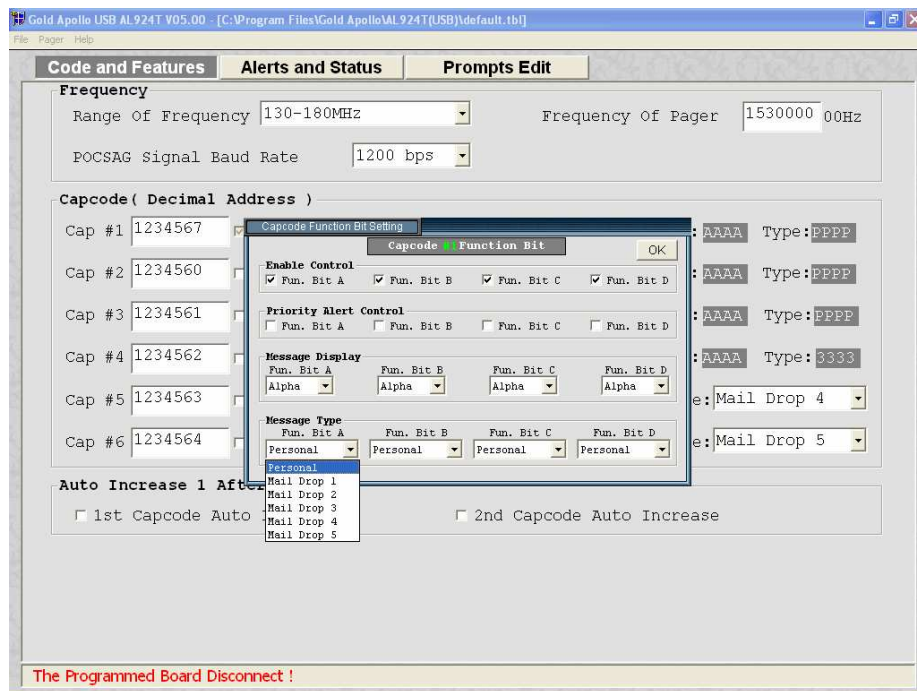
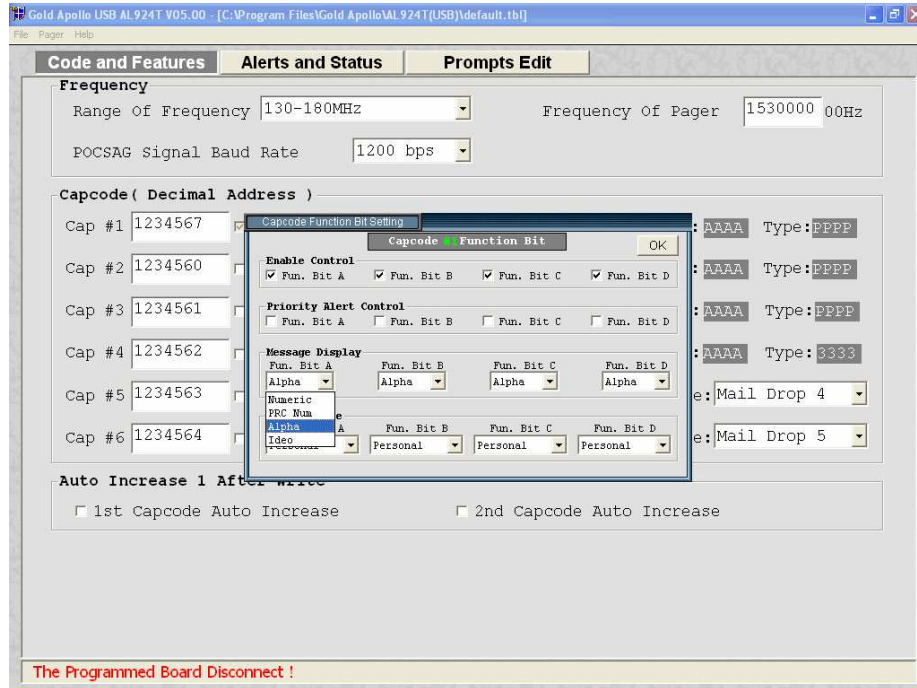
- **Range Of Frequency**
You can select the range of frequency and all setting will load default value.
- **Frequency Of Pager**
The frequency is on which the pager operates.
- **POCSAG Signal Baud Rate**
The baud rate is on which the pager operates.

Capcode (Decimal Address)

Capcode (Decimal Address)							
Cap #1	1234567	<input checked="" type="checkbox"/> ON	Fun. Bit	En: vvvv	Priority: ----	Disp: AAAA	Type: PPPP
Cap #2	1234560	<input type="checkbox"/> ON	Fun. Bit	En: vvvv	Priority: ----	Disp: AAAA	Type: PPPP
Cap #3	1234561	<input type="checkbox"/> ON	Fun. Bit	En: vvvv	Priority: ----	Disp: AAAA	Type: PPPP
Cap #4	1234562	<input type="checkbox"/> ON	Fun. Bit	En: vvvv	Priority: ----	Disp: AAAA	Type: 3333
Cap #5	1234563	<input type="checkbox"/> ON	<input type="checkbox"/> Priority	Display: Alpha		Type: Mail Drop 4	
Cap #6	1234564	<input type="checkbox"/> ON	<input type="checkbox"/> Priority	Display: Alpha		Type: Mail Drop 5	

- **Cap #1**
Please input 1st Capcode (7 Dec digits between 8 and 2097151).
- **ON**
Enable or disable 2nd Capcode (address).
- **Fun. Bit**
Click to set function bit(A、B、C、D) message control.





- **EN**
Function Bit(A、B、C、D) Enable Control: V is Enable, - is disable.
- **Priority**
Function Bit(A、B、C、D) Priority Alert: V is Enable, - is disable.

- **Disp**
Function Bit(A 、 B 、 C 、 D) Message Display:
 - **N: Standard Number.**
 - **P: PRC Number.**
 - **A: Alpha number.**
 - **I: Ideographic.**

- **Type**
Function Bit(A 、 B 、 C 、 D) Message Type:
 - **P: Personal.**
 - **1 to 5: Mail Drop 1 to Mail Drop 5.**

Auto Increase 1 after write

Auto Increase 1 After Write

1st Capcode Auto Increase

2nd Capcode Auto Increase

- 1st Capcode Auto Increase**
1st capcode always increment by one after write.

- 2nd Capcode Auto Increase**
2nd capcode always increment by one after write.

Alert and Status

Code and Features	Alerts and Status	Prompts Edit
Alerts and Status		
<input checked="" type="checkbox"/> Duplicate Msg Enable	Paging Disp Mode <input type="text" value="Direct"/>	<input type="checkbox"/> Direct Show Lamp On
<input type="checkbox"/> Discard Error Message	<input type="checkbox"/> Vibration And Beep	Out-of Service <input type="text" value="Disable"/>
Screen Contrast <input type="text" value="4"/> <input type="text" value="Screen"/>	Reminder Duration Control <input type="text" value="2 minutes"/>	
Battery Gauge Level-High <input type="text" value="1.39V"/>	Sequential Lockout Control <input type="text" value="disable"/>	
Battery Gauge Level-Med <input type="text" value="1.29V"/>	Password of Pager(4 Dec) <input type="text" value="0000"/>	
Battery Gauge Level-Low <input type="text" value="1.19V"/>	Pager Signal Polarity <input type="text" value="Normal"/>	
<input checked="" type="checkbox"/> Lowcell Alert Enable	<input checked="" type="checkbox"/> Counter Out Enable	<input checked="" type="checkbox"/> Long Message Control
<input type="checkbox"/> Display Source Enable		
Menu Of Pager		
<input type="checkbox"/> Set Scroll Disable	<input type="checkbox"/> Set Alarm Disable	<input type="checkbox"/> Zoom In Disable
<input type="checkbox"/> Pager Off Disable	<input type="checkbox"/> Set Time Disable	
<input type="checkbox"/> Auto Sleep Disable	<input checked="" type="checkbox"/> Set Alert Disable	<input type="text" value="Tone 1"/>
Manual Write		
<input checked="" type="checkbox"/> Manual Write Enable	<input checked="" type="checkbox"/> Password Required Enable	
<input checked="" type="checkbox"/> Frequency Modification Enable	<input checked="" type="checkbox"/> Password Modification Enable	
Prompts		
Power Up Logo <input type="text" value="APOLLO"/>	<input type="text" value="L C R"/>	Logo Font <input type="text" value="Large Font"/>
Prompt Language Type <input type="text" value="English"/>	Date Display Method <input type="text" value="mm-dd-yy"/>	
The Programmed Board Disconnect !		

Alerts and Status

Alerts and Status		
<input checked="" type="checkbox"/> Duplicate Msg Enable	Paging Disp Mode <input type="text" value="Direct"/>	<input type="checkbox"/> Direct Show Lamp On
<input type="checkbox"/> Discard Error Message	<input type="checkbox"/> Vibration And Beep	Out-of Service <input type="text" value="Disable"/>
Screen Contrast <input type="text" value="4"/> <input type="text" value="Screen"/>	Reminder Duration Control <input type="text" value="2 minutes"/>	
Battery Gauge Level-High <input type="text" value="1.39V"/>	Sequential Lockout Control <input type="text" value="disable"/>	
Battery Gauge Level-Med <input type="text" value="1.29V"/>	Password of Pager(4 Dec) <input type="text" value="0000"/>	
Battery Gauge Level-Low <input type="text" value="1.19V"/>	Pager Signal Polarity <input type="text" value="Normal"/>	
<input checked="" type="checkbox"/> Lowcell Alert Enable	<input checked="" type="checkbox"/> Counter Out Enable	<input checked="" type="checkbox"/> Long Message Control
<input type="checkbox"/> Display Source Enable		

Duplicate Msg. Enable

If it is selected, duplication detection is performed on all personal messages with the same message type as the new message, on a character by character basis. Error characters are ignored during the check. If all non-error characters in both messages match, the existing matching message is flagged as a duplicate. The message with the least number of errors is stored and the other messages are discarded. Duplication is not performed on mail-drop messages.

- Discard Error Message**
If it is selected, error message will be discarded.
- **Screen Contrast**
It selects the LCD display contract level.
- **Battery Gauge Level-High**
This value represents the battery voltage level necessary for the battery gauge to display a full battery. If the battery voltage is higher or equal to this value, the full battery gauge icon is displayed. Valid selections are: 1.58V, 1.53V, 1.48V, 1.43V, 1.39V, 1.34V, 1.29V, 1.24V, 1.19V, 1.14V, 1.09V, 1.05V, and 1.00V. The High level must be greater than the Med level, and the Med level Must be greater than the Low level. None of the levels can be equal to each other.
- **Battery Gauge Level-Med**
This value represents the battery voltage level necessary for the battery gauge to display a full battery. If the battery voltage is higher or equal to this value, the full battery gauge icon is displayed. Valid selections are: 1.58V, 1.53V, 1.48V, 1.43V, 1.39V, 1.34V, 1.29V, 1.24V, 1.19V, 1.14V, 1.09V, 1.05V, and 1.00V. The High level must be greater than the Med level, and the Med level Must be greater than the Low level. None of the levels can be equal to each other.
- **Battery Gauge Level-Low**
This value represents the battery voltage level necessary for the battery gauge to display a full battery. If the battery voltage is higher or equal to this value, the full battery gauge icon is displayed. Valid selections are: 1.58V, 1.53V, 1.48V, 1.43V, 1.39V, 1.34V, 1.29V, 1.24V, 1.19V, 1.14V, 1.09V, 1.05V, and 1.00V. The High level must be greater than the Med level, and the Med level Must be greater than the Low level. None of the levels can be equal to each other.
- Lowcell Alert Enable**
If it is selected, the pager emits a low battery cell alert when the battery reaches a low cell state.
- Display Source Enable**
If it is selected, the message will show the address source at last.
- **Paging Disp Mode**
If “Direct” is selected then the message will show on the display at a message received. Otherwise it only shows a message location icon on the display.

- Direct Show Lame On**
When the paging display is “Direct”, if it is selected, the back-light will turn on at a message received.
- **Sequential Lockout Control**
The value is a sequential lockout timer begins when a message arrives and is flagged as being sequentially locked out. If duplicate messages arrive, one of the messages is disregarded and not flagged as a duplicate. Valid selections are disabled, 30 seconds, 60 seconds, 120 seconds and 175 seconds.
- **Reminder Duration Control**
With this option selected, the time period begins with a newly arrived message and is reset every time a new message is received. Once the time period expires, the pager does not emit any more reminder alerts until a new message arrives. Valid time period selections are: Disable, 2 minutes, 10 minutes and 60 minutes.
- **Out-of Service Control**
With an out-of-service time specified by the code plug, the pager is considered “out of service” when it does not detect a POCSAG synchronization word for that time period. The out-of-service icon displays at this time. Valid selections are: disabled, 1 min, 2 min, 5 min and 10 min.
- **Password of Pager(4 Dec)**
It is used for the user’s manual programming.
- **Pager Signal Polarity**
It select the RF signal polarity is normal or invert.
- Counter Out Enable**
If it is selected, the message will indicate the counter number at first.
- Long Message Control**
If it is selected, then the message maximum length of 2,000 characters, otherwise it only accepts 300 characters.

Manu Of Pager

Menu Of Pager		
<input type="checkbox"/> Set Scroll Disable	<input type="checkbox"/> Set Alarm Disable	<input type="checkbox"/> Zoom In Disable
<input type="checkbox"/> Pager Off Disable	<input type="checkbox"/> Set Time Disable	
<input type="checkbox"/> Auto Sleep Disable	<input checked="" type="checkbox"/> Set Alert Disable	Tone 1 <input type="button" value="v"/>

- Set Scroll Disable**
If it is selected, menu of scroll is disabled.
- Pager Off Disable**
If it is selected, menu of pager off is disabled.
- Auto Sleep Disable**
If it is selected, menu of auto sleep is disabled.
- Set Alarm Disable**
If it is selected, menu of set alarm is disabled.
- Set Time Disable**
If it is selected, menu of set time is disabled.
- Set Alert Disable**
If it is selected, menu of set alert is disabled then you must select one of 14 type alerts as your default.
- Zoom In Disable**
If it is selected, menu of zoom function will be disabled.

Manual Write

Manual Write

- | | |
|---|--|
| <input checked="" type="checkbox"/> Manual Write Enable | <input checked="" type="checkbox"/> Password Required Enable |
| <input checked="" type="checkbox"/> Frequency Modification Enable | <input checked="" type="checkbox"/> Password Modification Enable |

- Manual Write Enable**
If it is selected, manual write enable.
- Frequency Modification Enable**
If it is selected, frequency modification is enabled at manual programming.
- Password Required Enable**
If it is selected, enters manual programming password is required.
- Password Modification Enable**
If it is selected, enters manual programming password can be modified.

Prompts

Prompts

- | | | | | |
|----------------------|--------------------------------------|------------------------------------|---------------------------------------|---|
| Power Up Logo | <input type="text" value="APOLLO"/> | <input type="text" value="L C R"/> | Logo Font | <input type="text" value="English(Large)"/> |
| Prompt Language Type | <input type="text" value="English"/> | Date Display Method | <input type="text" value="mm-dd-yy"/> | |

Prompts Edit

Each prompt can be customized in the code plug, if desired, or the defaults can be used.

Code and Features	Alerts and Status	Prompts Edit
NO PAGES ----->	NO PAGES	R DELETE ALL ? ----> DELETE ALL ?
TONE ONLY ----->	TONE ONLY	C TIME SET -----> TIME SET
SLEEP ----->	SLEEP	L ALARM SET -----> ALARM SET
SILENT ----->	SILENT	D SCROLL SET -----> SCROLL SET
PAGER OFF ? ---->	PAGER OFF ?	START END -----> START END
DELETE? ----->	DELETE ?	SILENT & BEEP --> SILENT & BEEP
UP OR ESCAPE --->	UP OR ESCAPE	PAGER OFF -----> PAGER OFF
MESSAGE LOCK --->	MESSAGE LOCK	SET ALERT -----> SET ALERT
MESSAGE UNLOCK ->	MESSAGE UNLOCK	AUTO SLEEP SET -> AUTO SLEEP SET
DELETE ----->	DELETE	MESSAGE AREA ---> MESSAGE AREA
DELETE ALL ----->	DELETE ALL	MAIL DROP AREA -> MAIL DROP AREA
MOVE TO MEMO --->	MOVE TO MEMO	ZOOM IN -----> ZOOM IN
SET SCROLL ----->	SET SCROLL	ZOOM OUT -----> ZOOM OUT
SET TIME ----->	SET TIME	CHIRP ON -----> CHIRP ON
SET ALARM ----->	SET ALARM	CHIRP OFF-----> CHIRP OFF

The Programmed Board Disconnect !